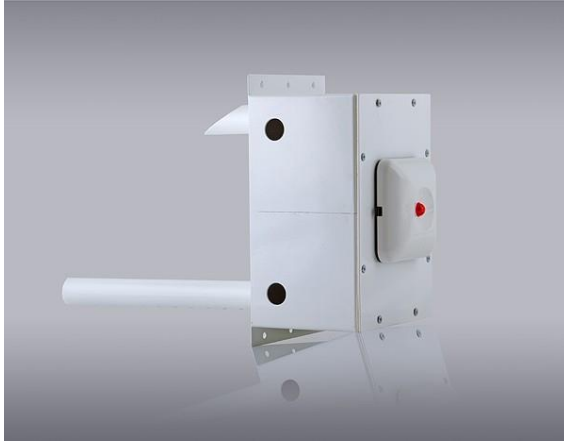


## YKB-02

### Duct smoke detector

#### Product Description



Duct smoke detector YKB-02 is designed to detect the presence of smoke in airstream of ductwork sections or ventilating compartments by the smoke detector mounted in it.

Depending on the type of the fire detector mounted, the duct smoke detector is produced in two variants – for Conventional Fire Alarm Systems (YKB-02K) and for Addressable Fire Alarm Systems (YKB-02A).

In the device is mounted an optical-smoke fire detector type FD8030 for Conventional Systems or FD7130 for Addressable Systems. In order to control the condition of the integrated fire detector, on the housing of the duct smoke detector is mounted an outboard LED Remote Indicator RI31.

In case of smoke in the main air conduct, part of this smoke goes through the duct smoke detector and activates the fire detector. The latter sends signal to the Fire Control Panel and the outboard Remote indicator.

#### Technical data

Speed of the airflow into the air conduit	- 0,5 ÷ 20 m/s
Existence of a mechanical filter of the input and the output	- Yes
Base type of fire mounted detector	- DB8000D (DB7100)
Type of the Fire Detector	- FD8030 (FD7130)
Type of the mounted Remote Indicator	- RI31
Option for installation of different type smoke detectors	- Yes
Dimensions (without the inlet tube, the outlet tube and the nozzles)	(200x120x114)mm
Inlet tube dimensions	ø22 x 200 mm
Outlet tube dimensions	ø22 x 70 mm
Weight	1,3 kg

